

PROVISION OF SHELTER DURING INCLEMENT WEATHER

We are pleased to announce that as from 21st September we are making available temporary shelter facilities for times of inclement weather only i.e. sudden showers of rain affecting play.

We are very aware of the continuing threat from COVID 19 and therefore there are strict rules governing the use of these facilities which all must follow. If they are flouted we will have no option other than to withdraw this facility.

There will be 3 distinct areas of shelter each accommodating 6 players only..

Shelter Area 1 (Clubhouse =using Conservatory (L) hand door only)

to serve players on either Rink 1 or 2 (alternate days)

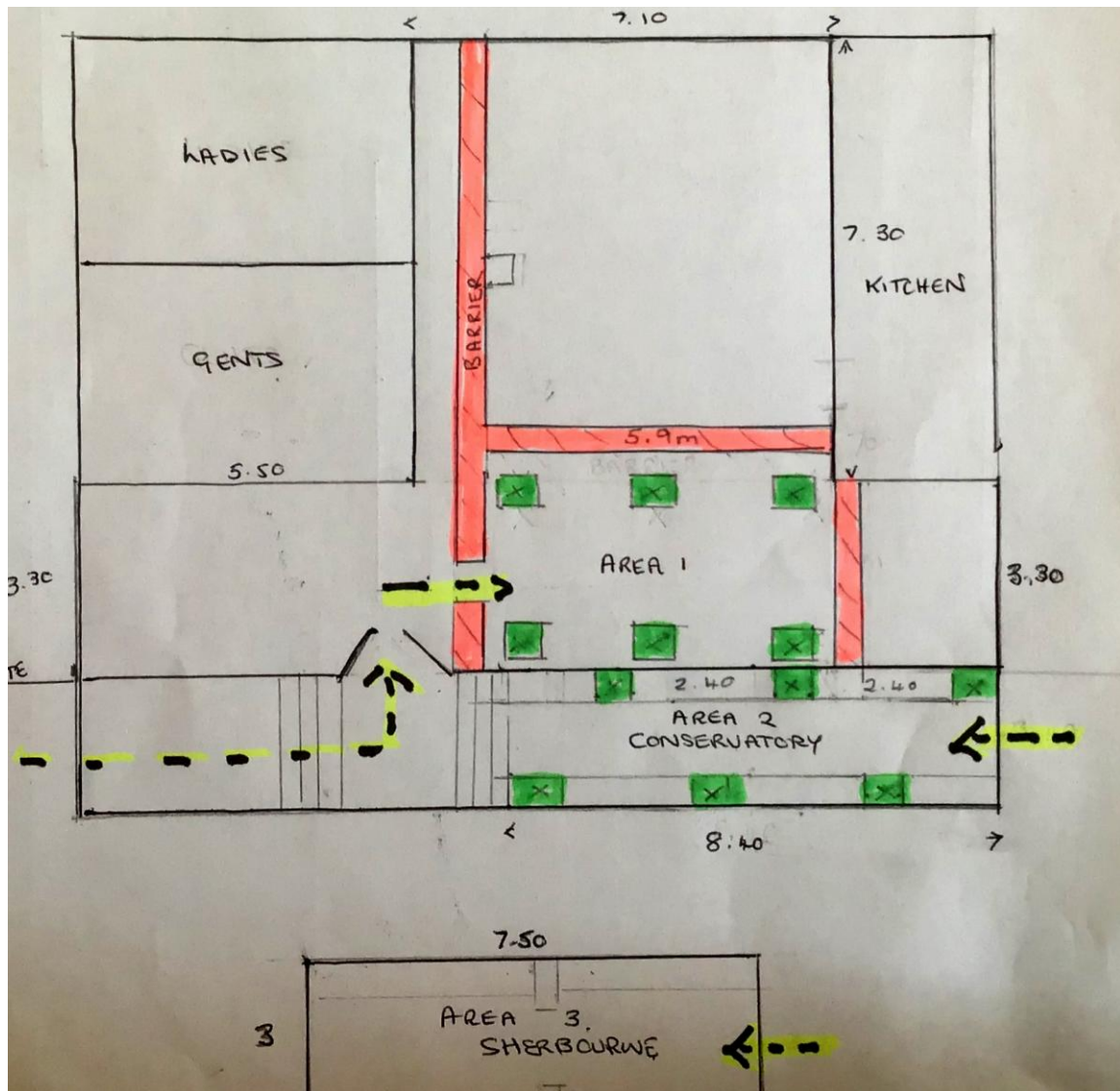
Shelter Area 2 (Conservatory = using door Sherborne end only)

to serve players on either Rinks 3 or 4 (alternate days)

Shelter Area 3 (Sherborne using ® hand door only)

to serve players on either Rinks 5 or 6 (alternate days)

See diagram



Players must use their designated area for their rink and not use another area. This is not only for the protection of players but it enables us to keep our Test and Trace records correct.

Visitors and Spectators will not be allowed to use these facilities

On entering and leaving their designated shelter areas players must use either the hand sanitizers provided or their own.

We continue to stress to members that they should wipe down touched surfaces and to remain vigilant.

Chairs or seating will be marked out in these 3 areas for 6 people. Please use the placing provided as they have been carefully socially distanced. Do not get other chairs or seating out.

It is advisable to wear a face covering when seeking shelter

The shelter areas and indeed all indoor areas are not to be used for changing or storing personal belongings and equipment.

Players should continue to change their footwear at the side of the rink
When making use of the shelter provided, leave all personal belongings at the rink side. We suggest you pack a black bin liner or similar in your bowls bag to facilitate wet weather protection of your personal belongings.

Under no circumstances are lockers to be used.

The Clubhouse (except for toilet access), kitchen, interior changing rooms, conservatory (except for collecting and returning rink boxes) and the Sherbourne will at all other times continue to remain unavailable..

When taking shelter all available external doors should be open to provide ventilation

These measures are required to in place for there now exists a legal obligation to follow strict COVID rules in line with the “Rule of 6”.

So please fellow members follow the rules and help us provide, and remain in, as safe a Covid secure environment as we can possibly provide.

Jan Collins
President